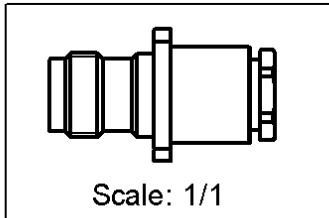
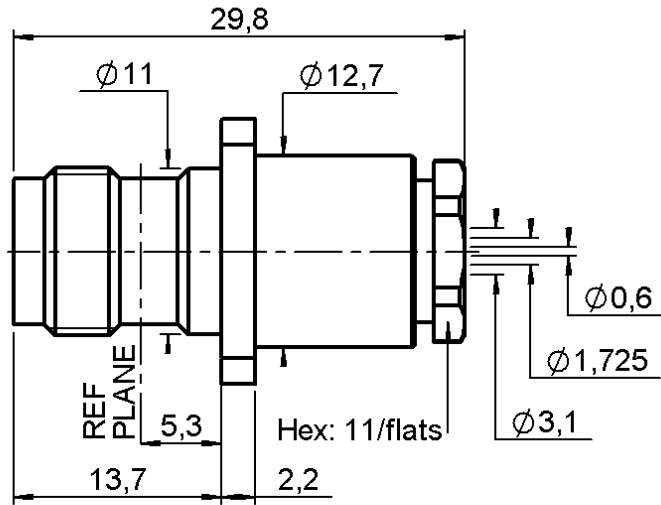
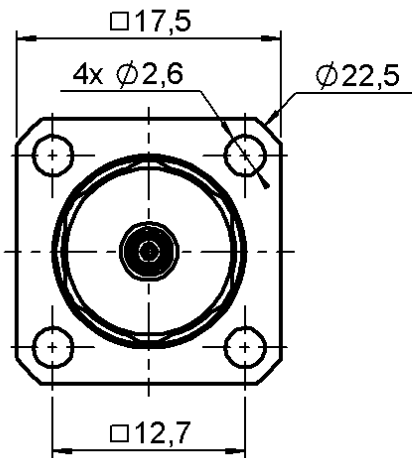


**STRAIGHT PLUG CLAMP TYPE**

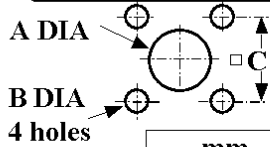
**R143.275.000**

**CABLE 2.6/50 S**

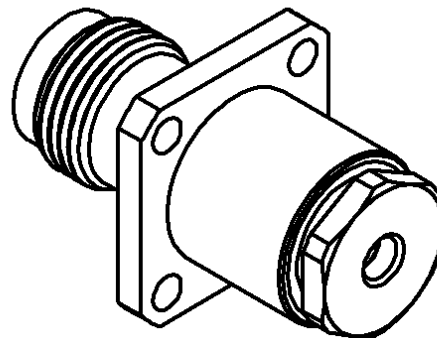
Series : TNC



**PANEL CUT OUT**



	mm	
	Maxi	mini
A (F. Mount)	13	12.9
A (R. Mount)	11.3	11.2
B	2.7	2.6
C	12.75	12.65



All dimensions are in mm.

COMPONENTS	MATERIALS	PLATING
BODY	BRASS	NICKEL 2 µm
CENTRE CONTACT	BERYLLIUM COPPER	GOLD 0.5 OVER NICKEL 2 µm
OUTER CONTACT	-	- µm
INSULATOR	PTFE	
GASKET	SILICONE RUBBER	
OTHERS PARTS	BRASS	NICKEL 2 µm
-	-	-
-	-	-



Edition : 9845 L

Design changes may be in order to improve the product.

**STRAIGHT PLUG CLAMP TYPE**

**R143.275.000**

**CABLE 2.6/50 S**

Series : TNC

**ELECTRICAL CHARACTERISTICS**

Impedance **50** Ω  
 Frequency **0-11** GHz  
 VSWR **1.30 + 0.000** x F(GHz) Maxi  
 Insertion loss **0.06** √F(GHz) dB  
 RF leakage - ( **57** - F(GHz)) dB mini  
 Operating temperature **-65/+165** °C  
 Voltage rating **335** Veff Maxi  
 Dielectric withstanding **1000** Veff mini  
 Insulation resistance **5000** MΩ mini

**SPECIFICATION**

Stripping	a	b	c	d	e	f
mm	0.00	0.00	0.00	0.00	0.00	0.00

Assembly instruction : **Clamp 01**

Recommended cables

- KX 22A
- RG 188
- RG 179
- RG 187
- RG 316

Cable retention

- pull off **110** N mini
- torque **NA** N.cm

**MECHANICAL CHARACTERISTICS**

Centre contact retention  
 Axial force – Mating end **27** N mini  
 Axial force – Opposite end **27** N mini  
 Torque **NA** N.cm mini

**TOOLING**

Part Number	Description	Hexagon
.	.	.

Recommended torque

Mating **NA** N.cm  
 Panel nut **NA** N.cm  
 Clamp nut **450** N.cm  
 A/F clamp nut **11.000** mm

**OTHERS CHARACTERISTICS**

Mating life **500** Cycles mini  
 Weight **0.000** g

**ENVIRONMENTAL**

Hermetic seal **NA** Atm.cm3/s  
 Leakage – pressurised only **NA** Mpa



Edition : 9845 L

Design changes may be in order to improve the product.